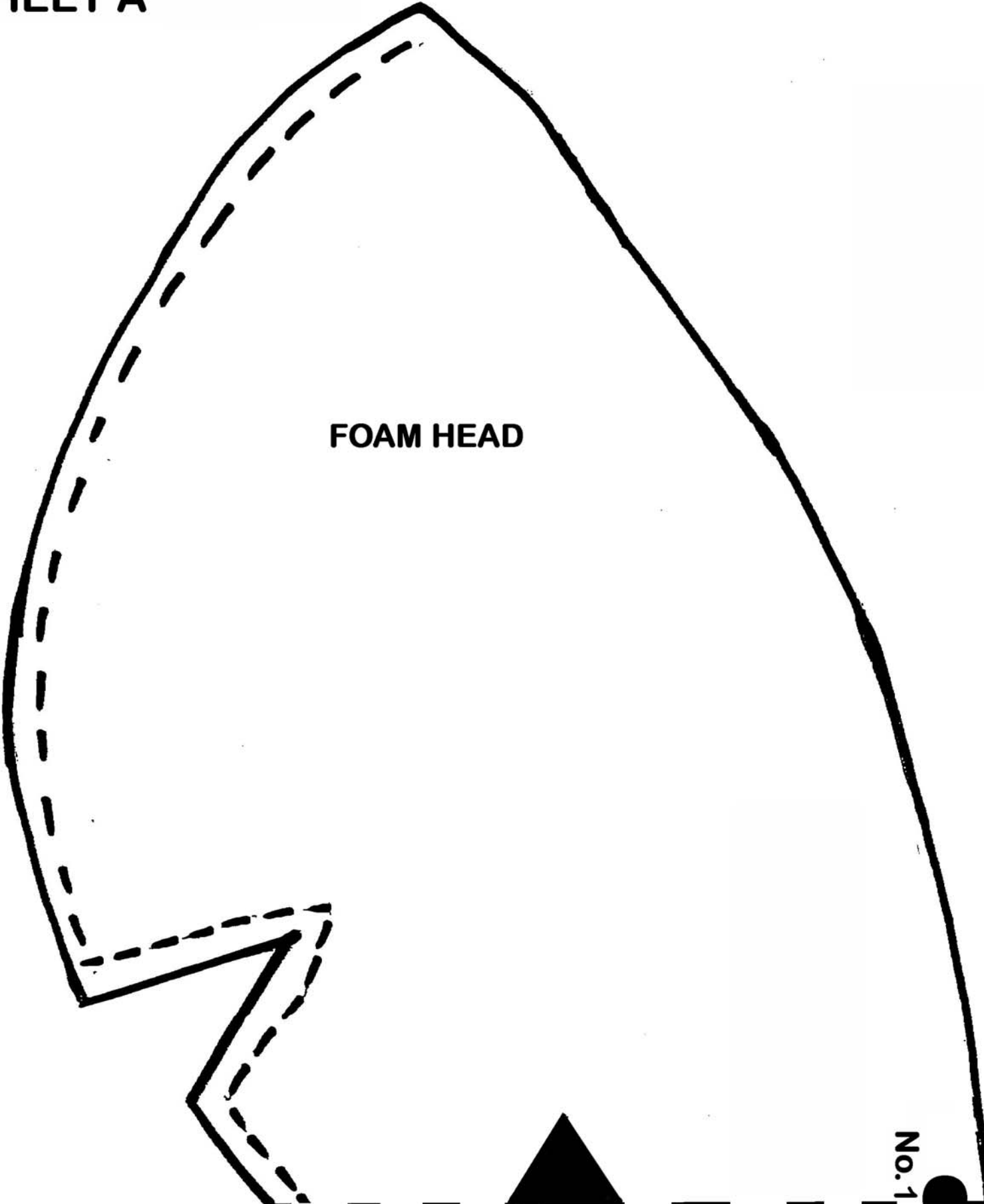


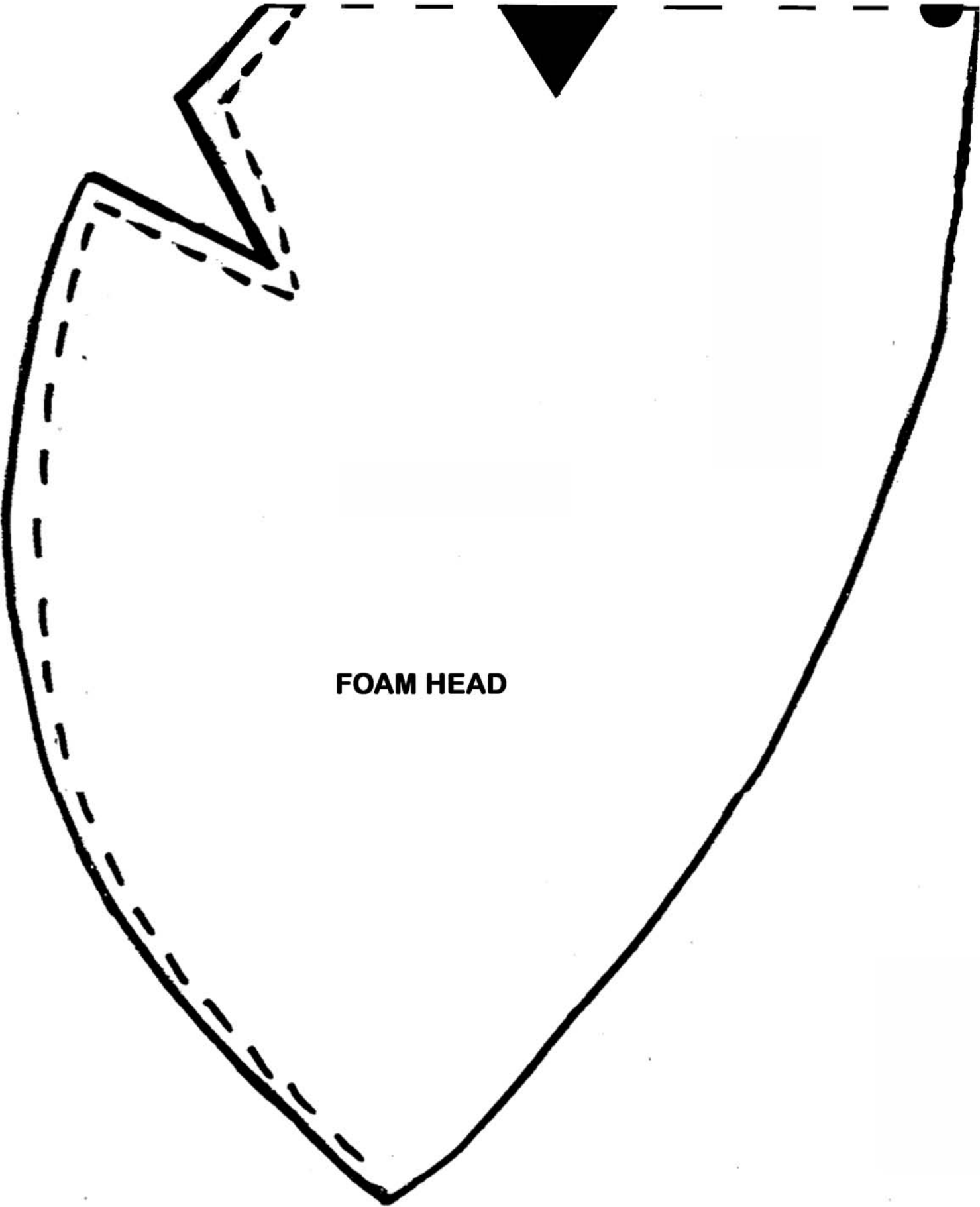
SHEET A



FOAM HEAD

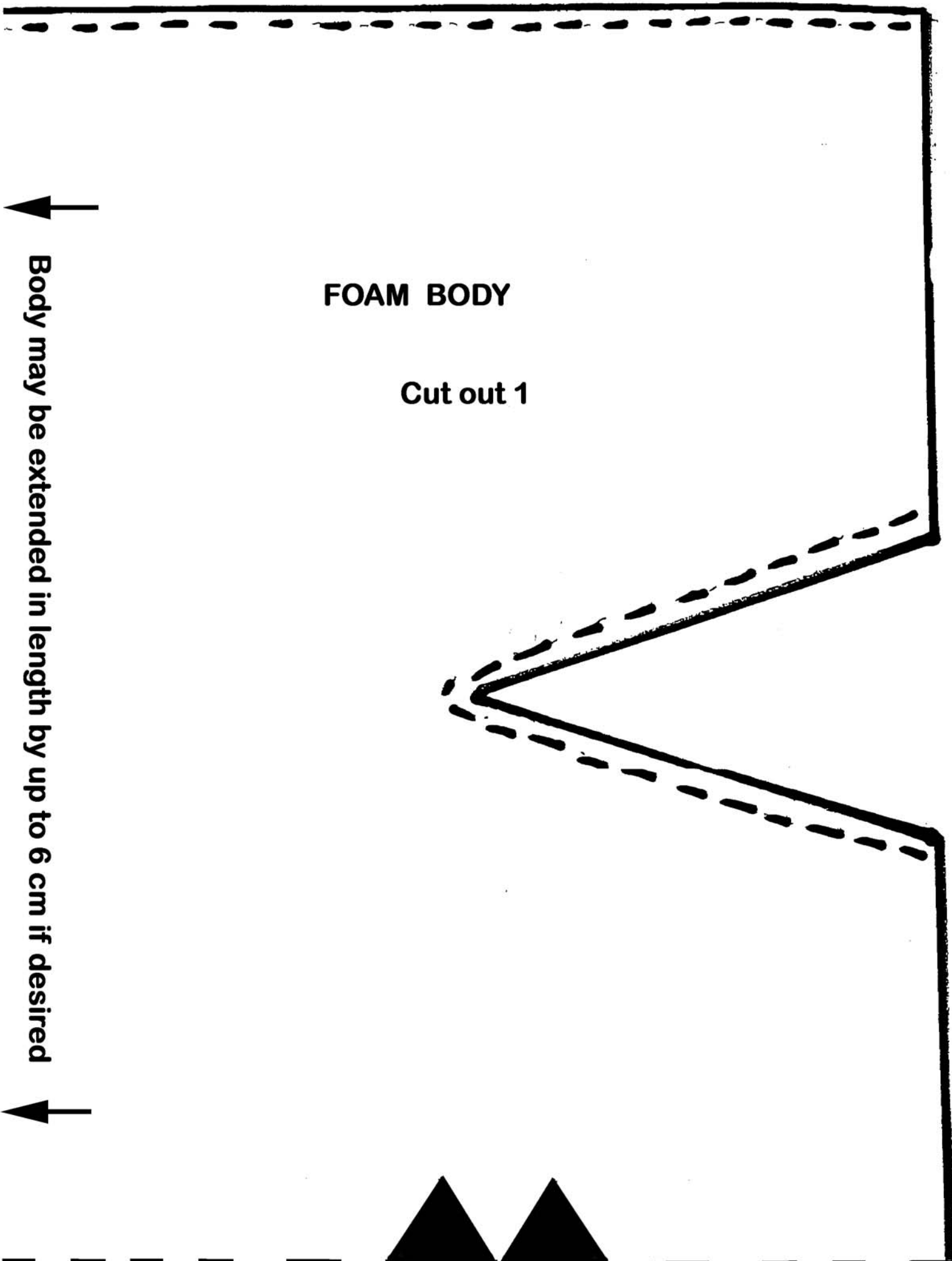
No. 1

SHEET B



FOAM HEAD

SHEET C



FOAM BODY

Cut out 1

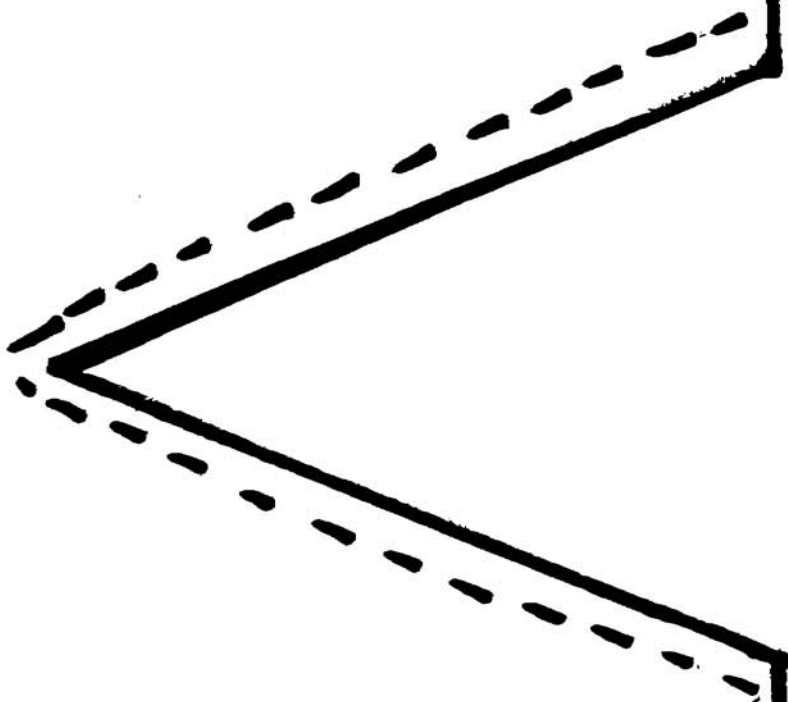
Body may be extended in length by up to 6 cm if desired

SHEET D



FOAM BODY

Cut out 1

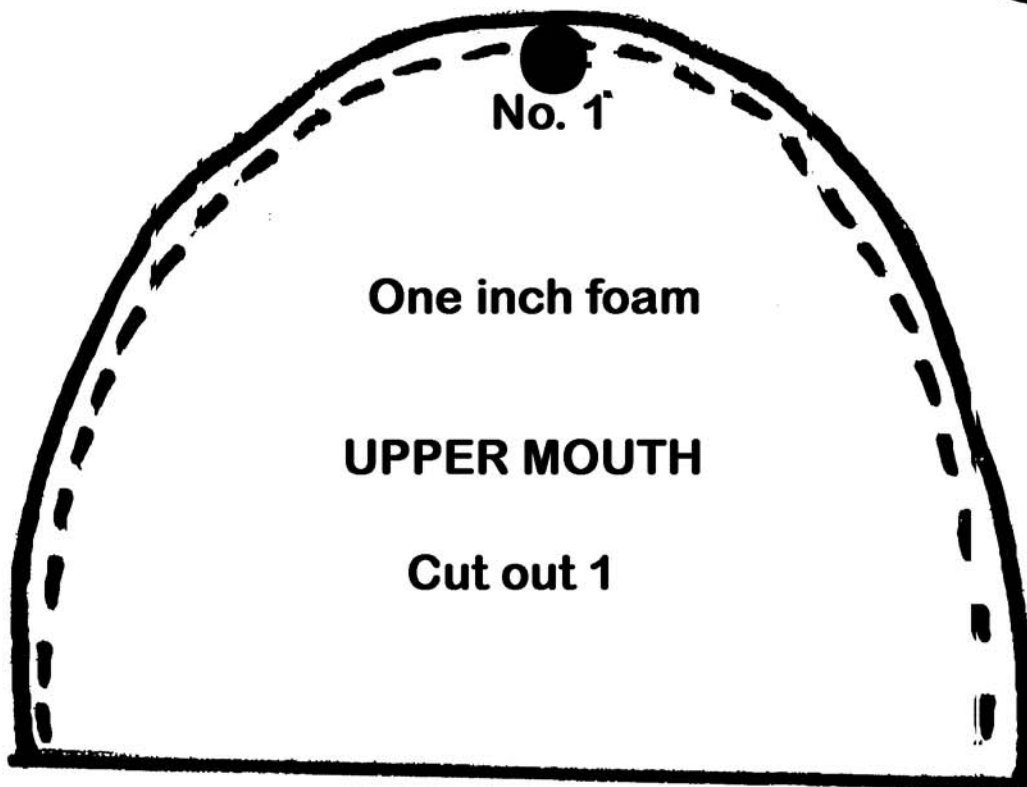
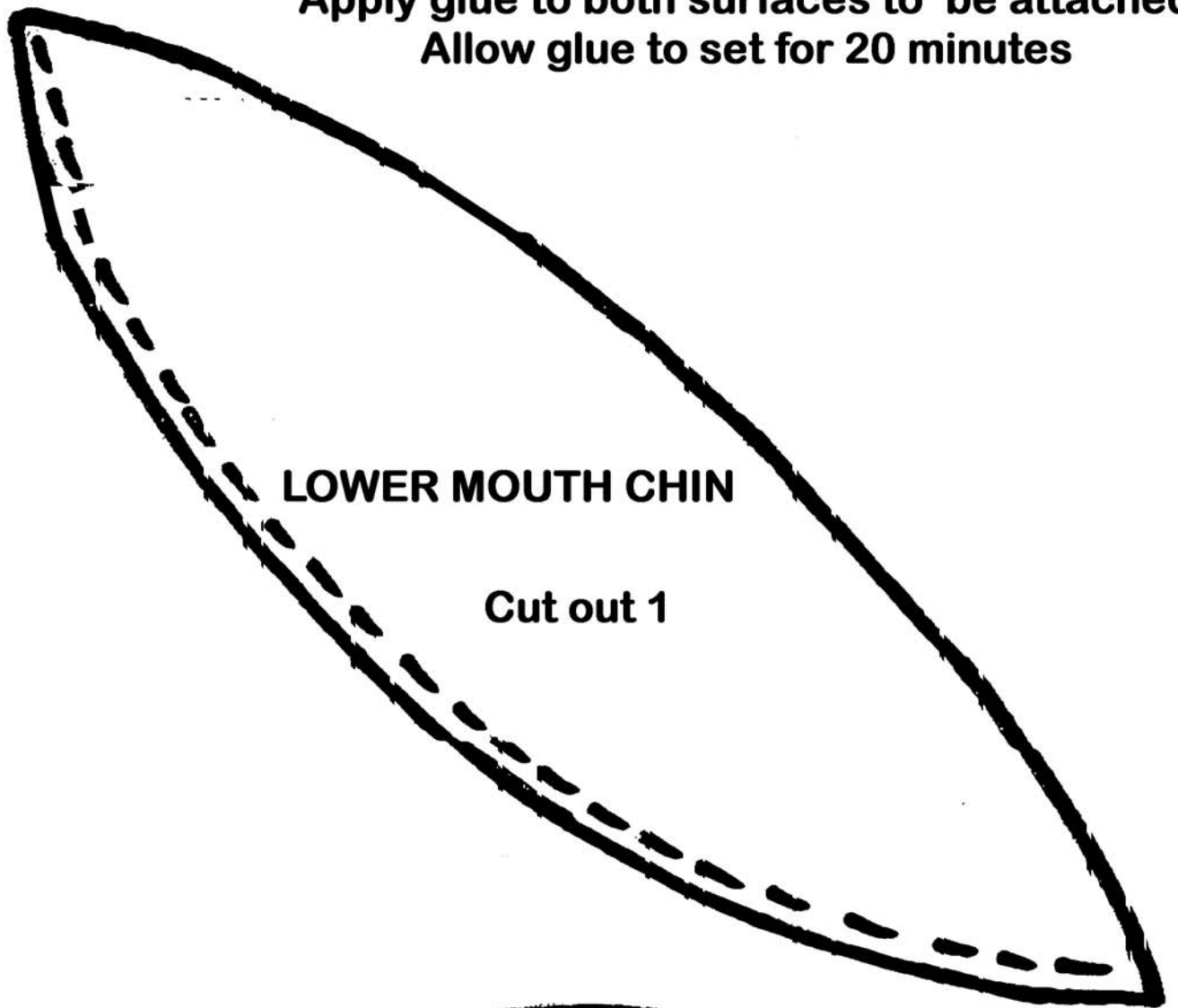


Body may be extended in length by up to 6 cm if desired

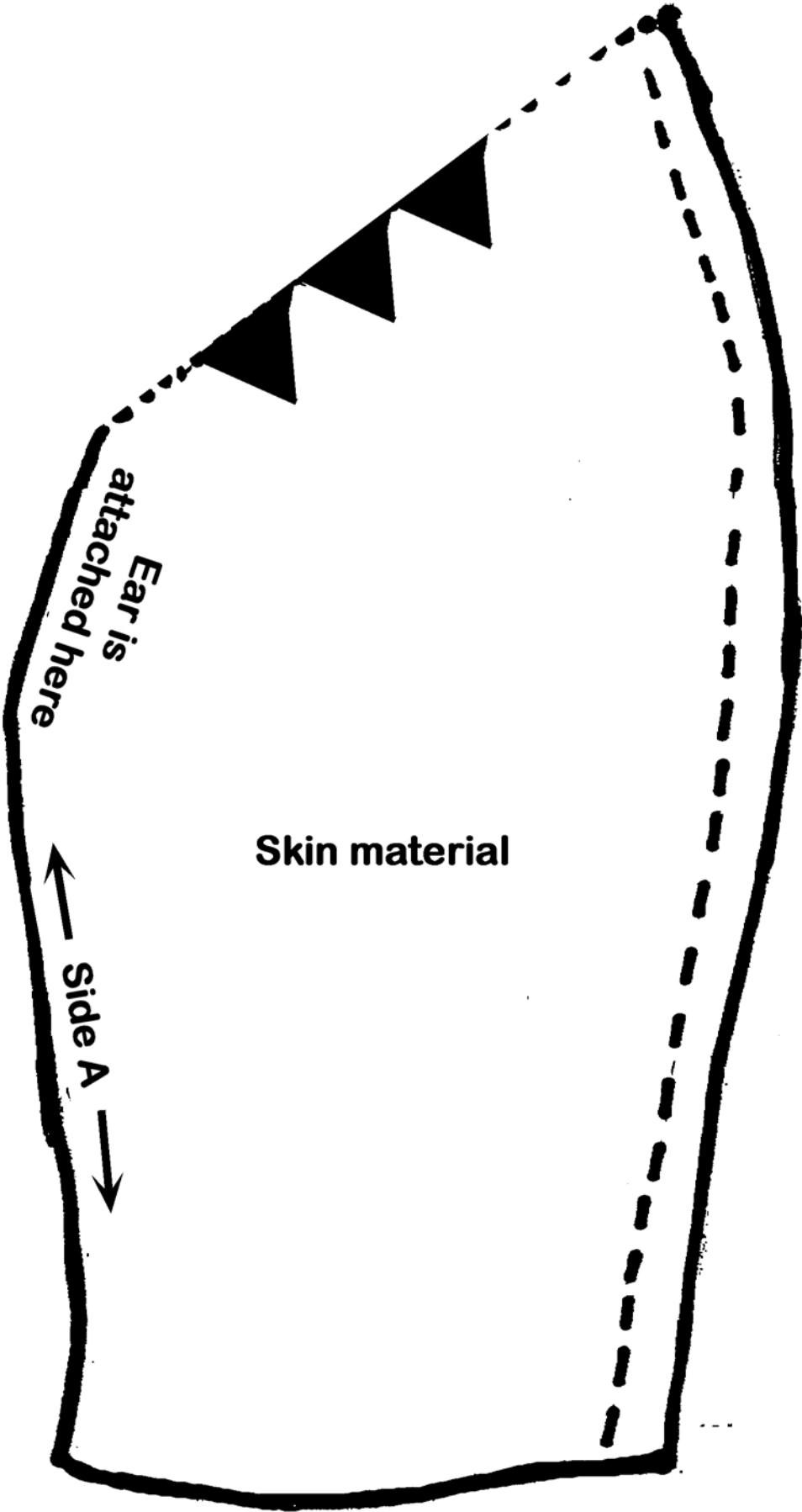


SHEET E

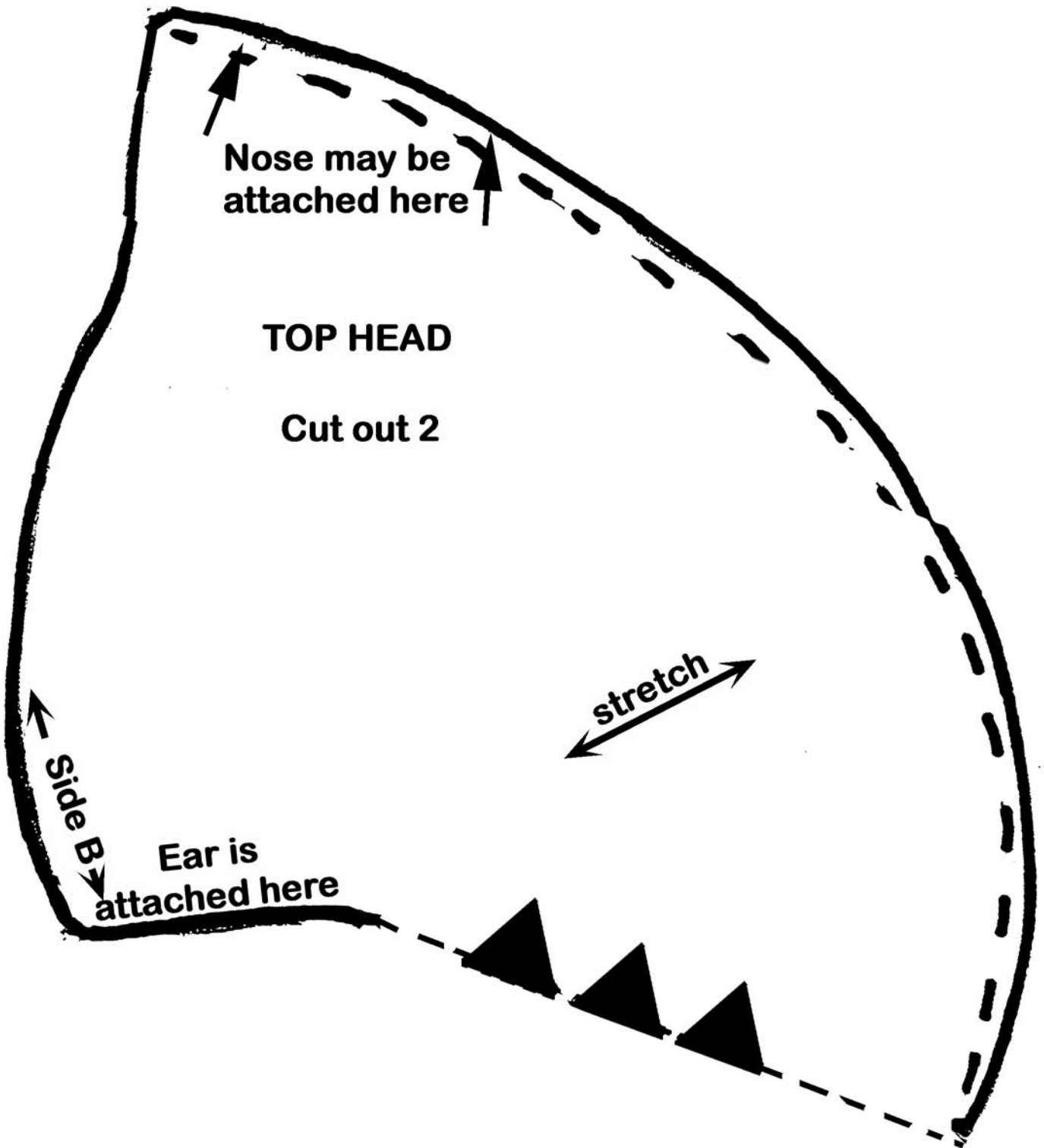
Use only foam adhesive
Glue along edge indicated by dotted line
Apply glue to both surfaces to be attached
Allow glue to set for 20 minutes



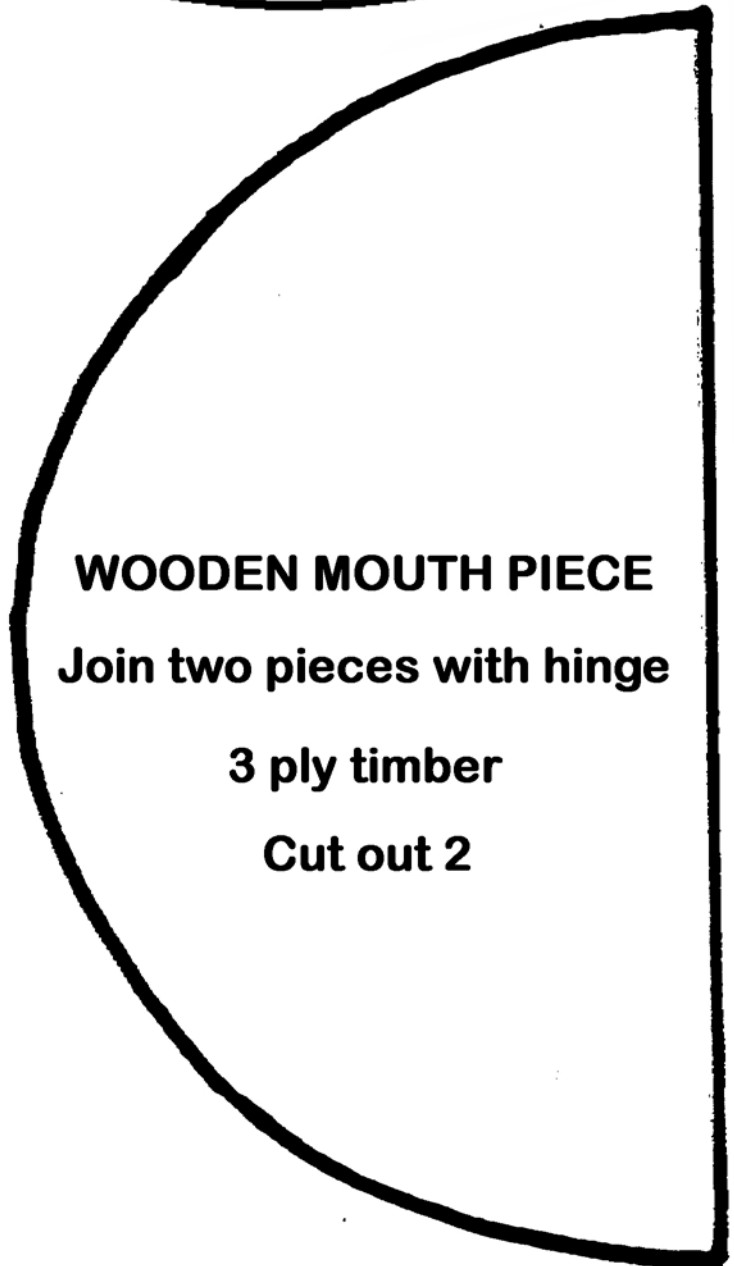
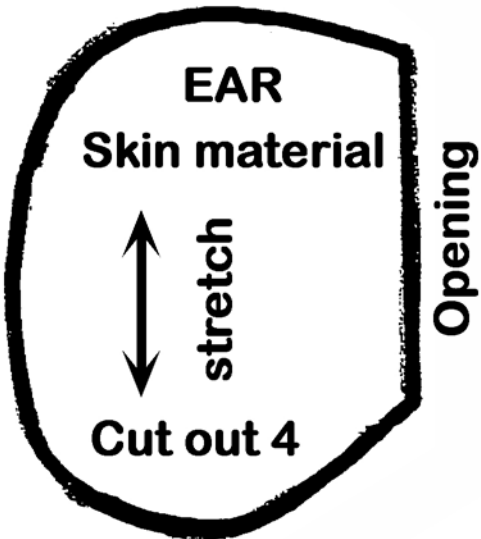
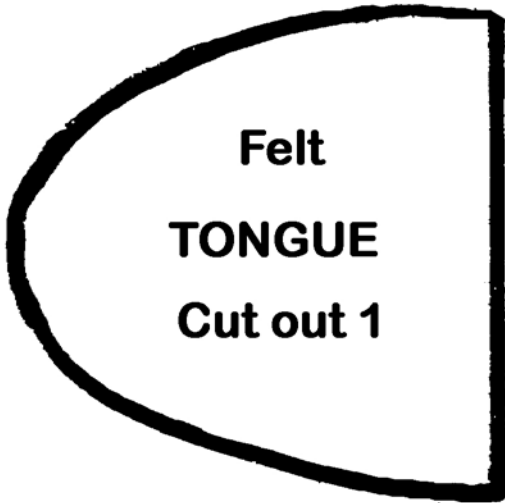
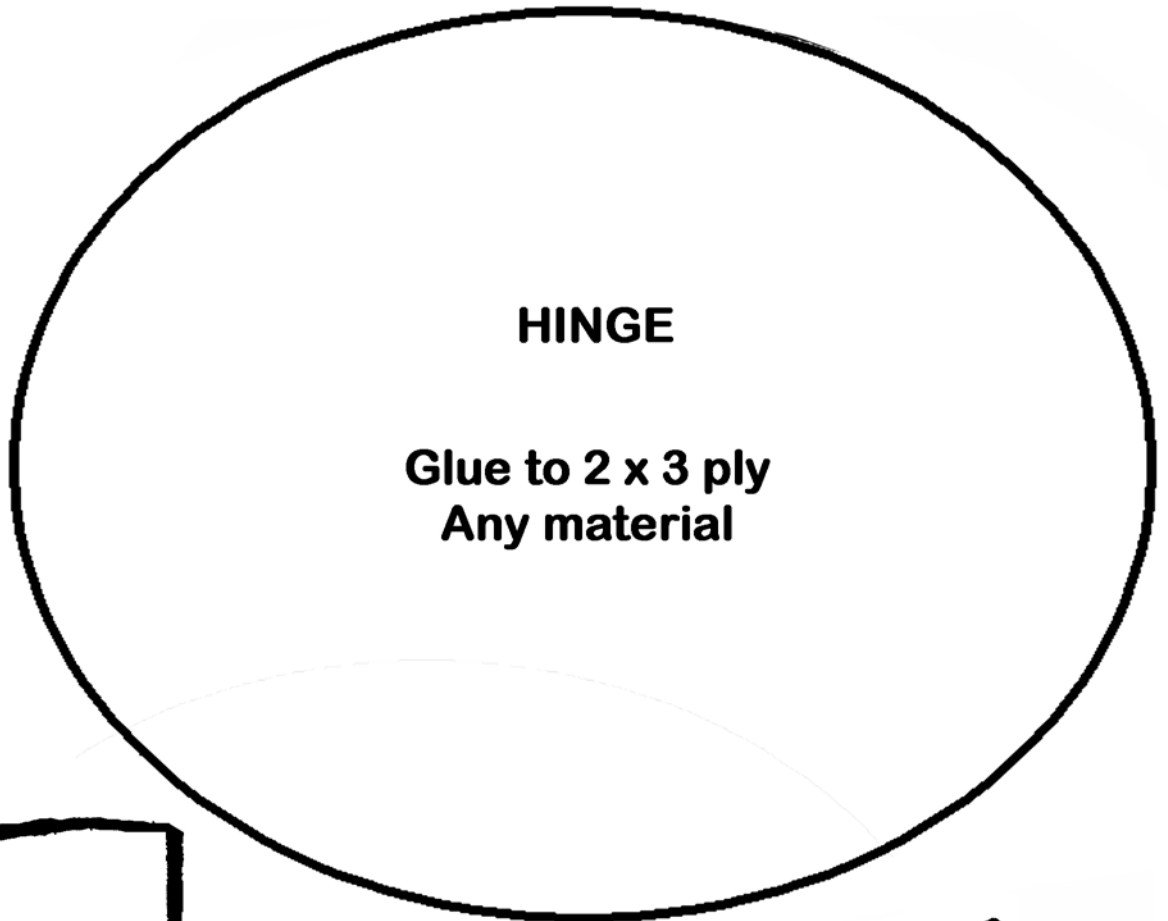
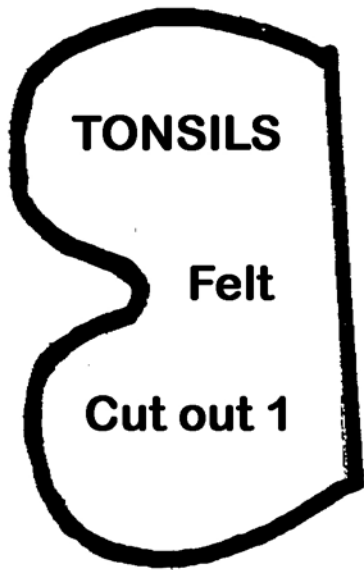
SHEET F



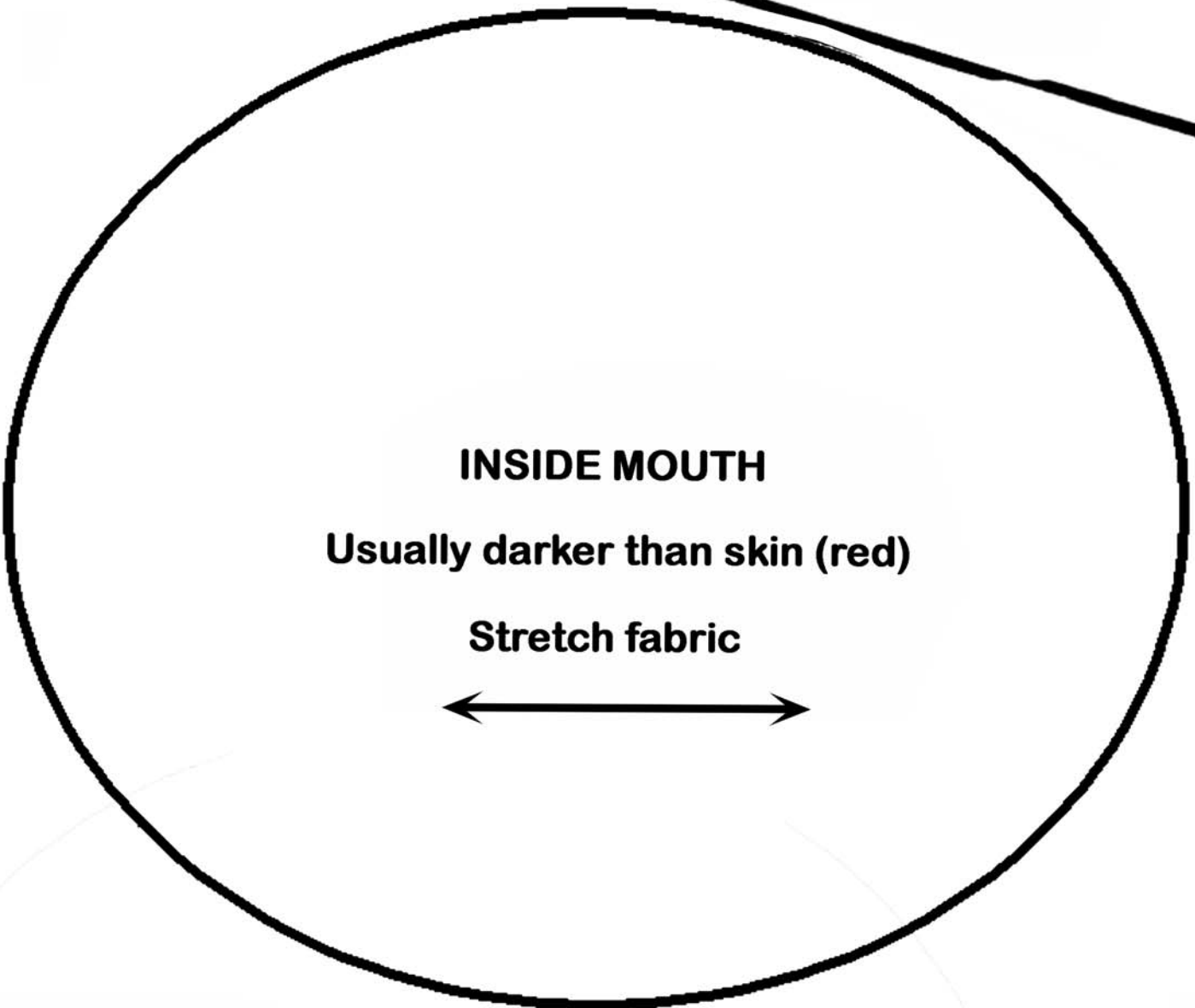
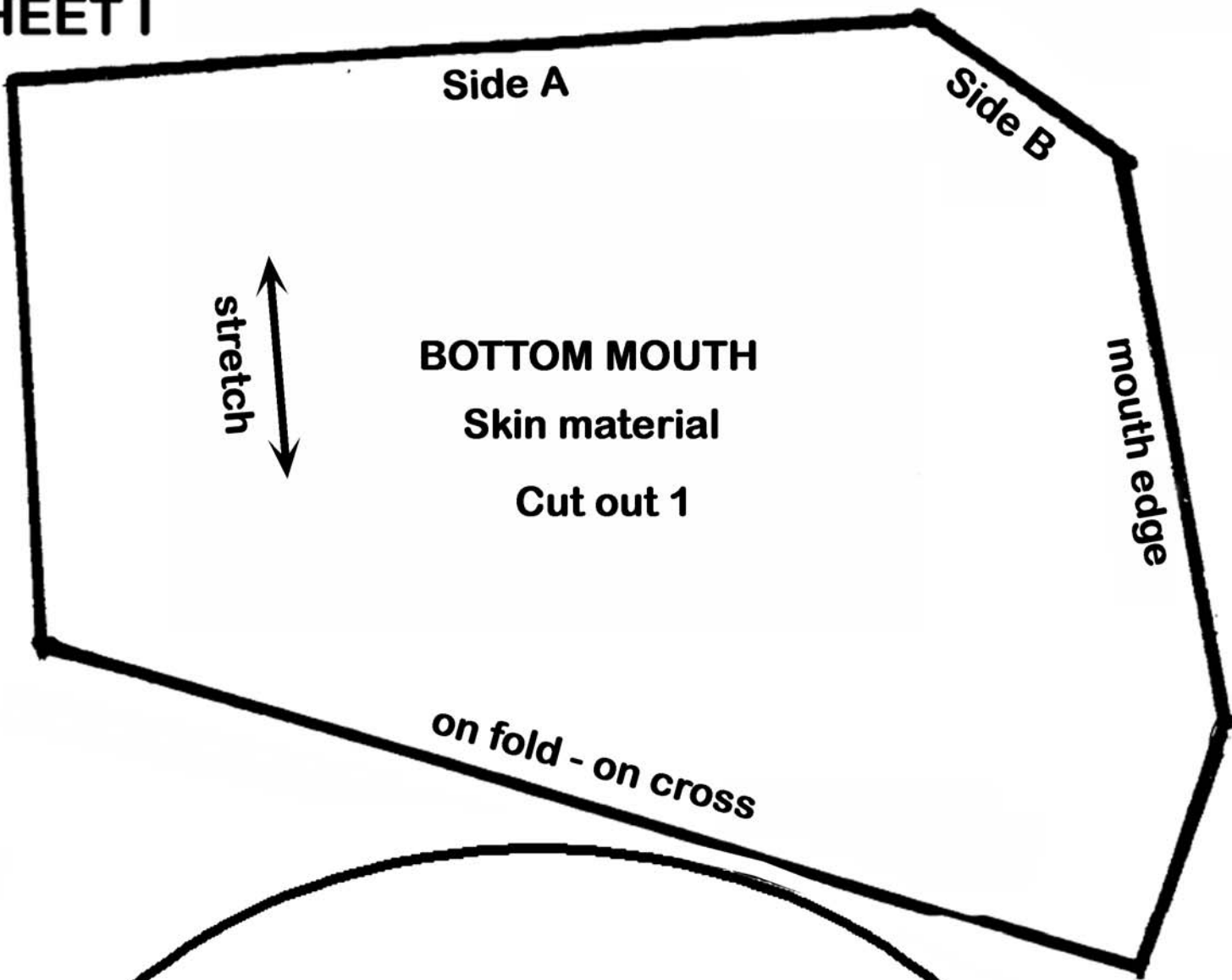
SHEET G



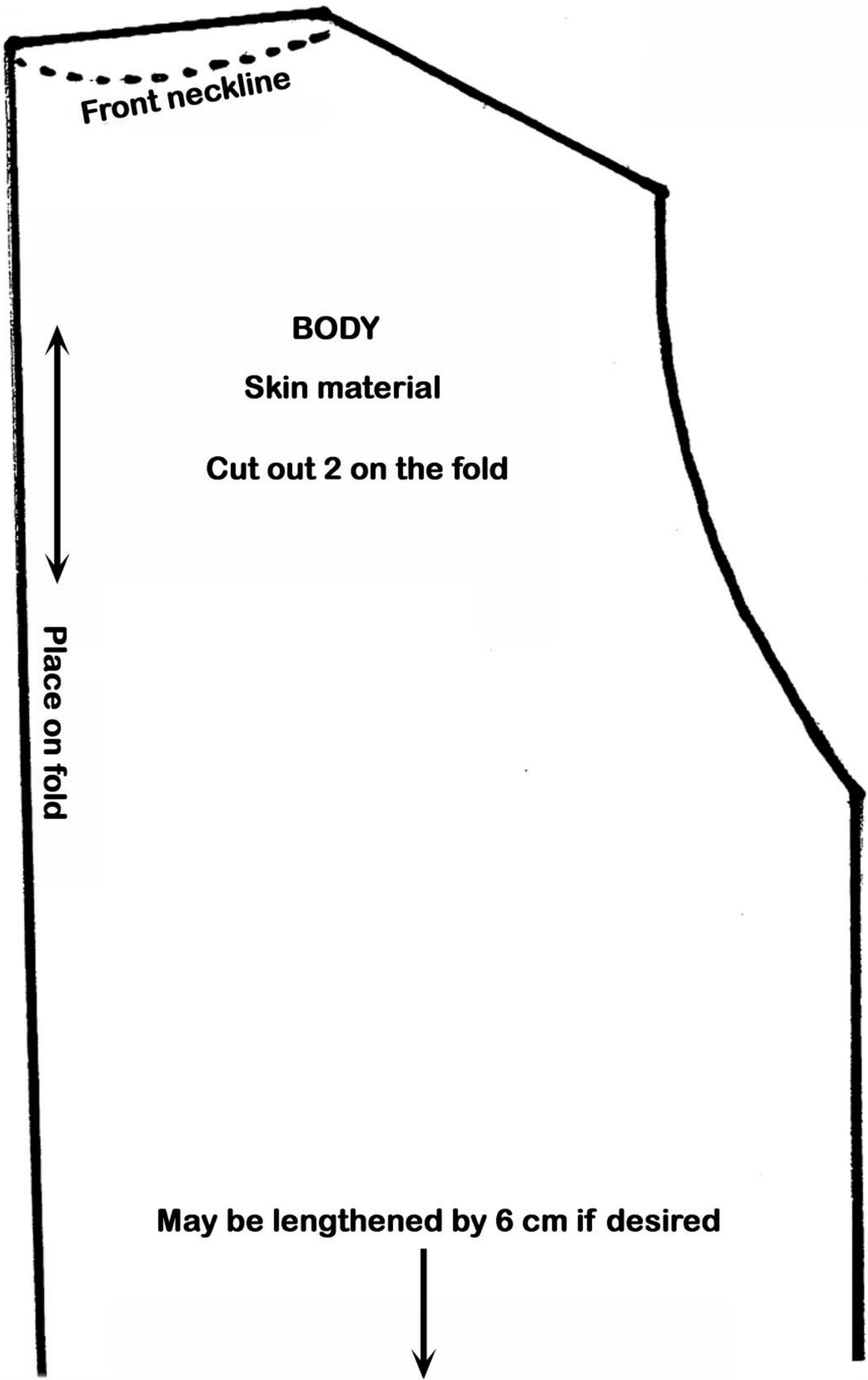
SHEET H



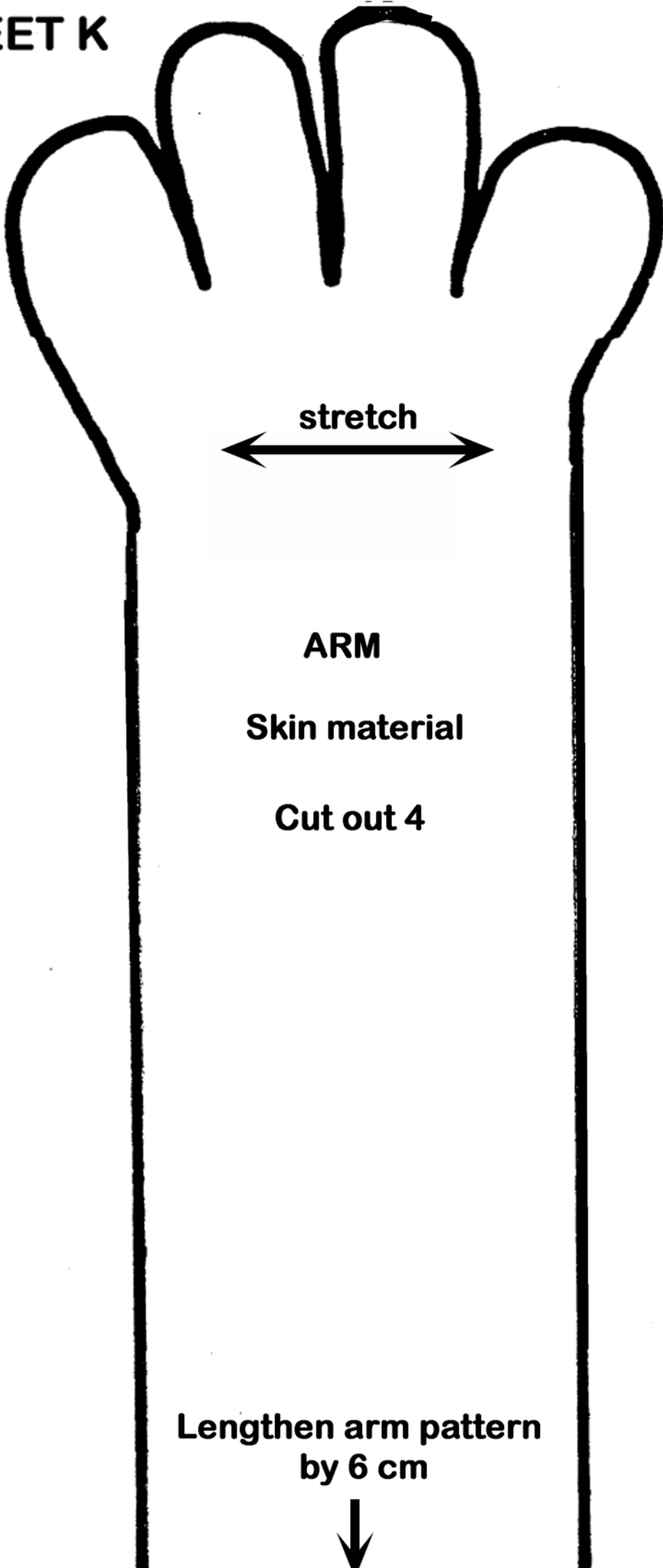
SHEET I



SHEET J



SHEET K



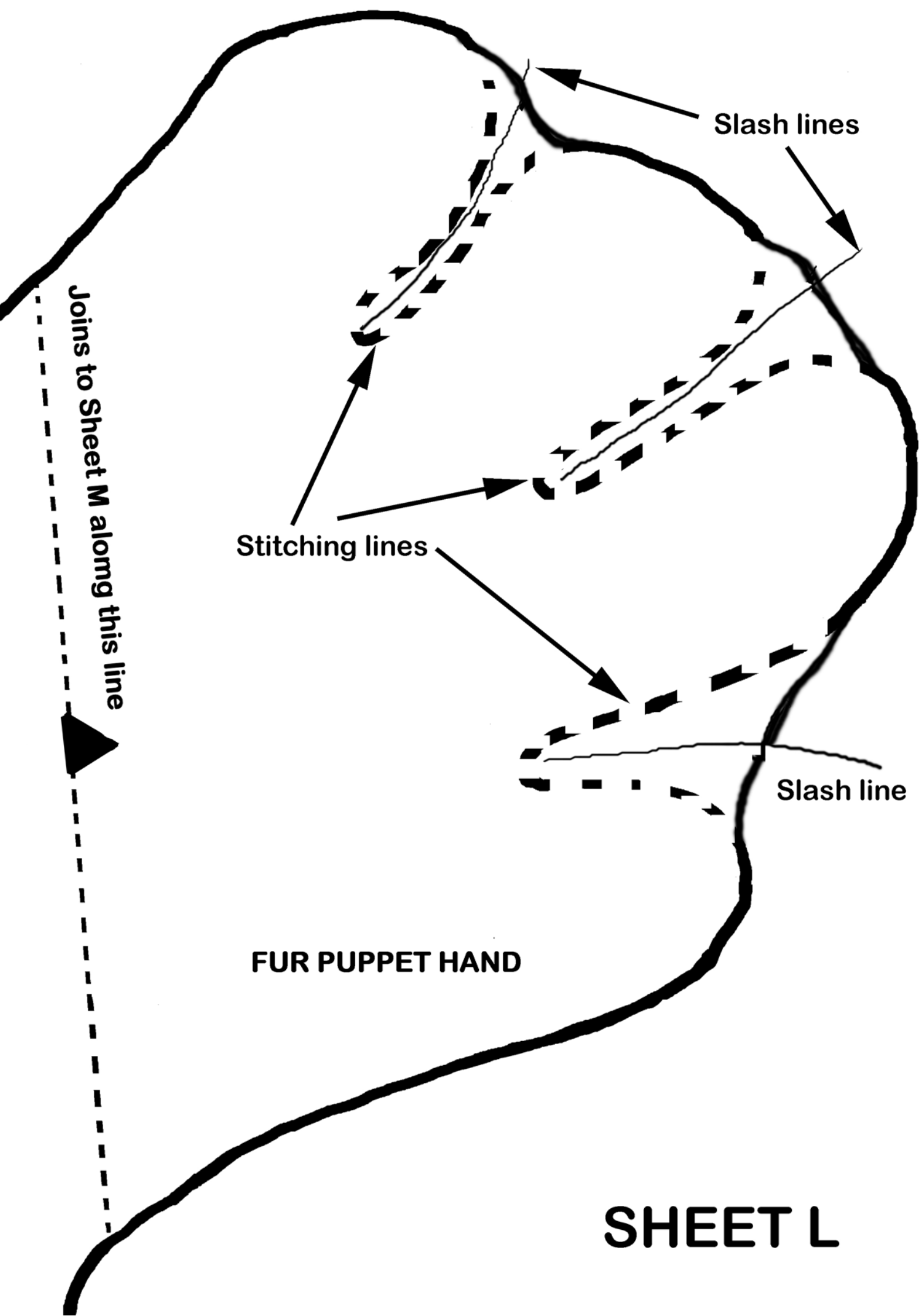
ARM

Skin material

Cut out 4

**Lengthen arm pattern
by 6 cm**





SHEET M

Using a large sheet of paper draft the following pattern, starting at point O.

From point O draw a straight line 46.5 cm down the page.

Place marks at the measurements shown.

Draw the lines indicated from these marks.

